



6063 Extruded Aluminum Shapes T - Slot Aluminum Alloy Assembly Line Profiles

Our Product Introduction

Basic Information

- Place of Origin: China
- Brand Name: HENTEC ,KUNTAI
- Certification: CA ,CE ,ISO14001:2004, ISO9001:2000
- Minimum Order Quantity: 1 ton
- Packaging Details: Ep paper ,kraft ,pallet
- Delivery Time: 20days
- Payment Terms: T/T ,L/C
- Supply Ability: 100 000ton each month



Product Specification

- Product Name: Industrial Aluminium Profile
- Alloy: 6063
- Material: Aluminum
- Surface Treatment: Mill Finished, Anodized , Electrophoretic Coated, Powder Spray Coated, Drawbench, Steel Polished
- Deep Process: Milling, Drilling, Bending, Cutting
- Temper: T4, T5, T6
- Highlight: **aluminum extrusion profiles, aluminium extruded profiles**

for more products please visit us on aluminumextrusion-profiles.com

Product Description

6063 Extruded Aluminum Shapes T - Slot Aluminum Alloy Assembly Line Profiles

Extruded T-Slot Aluminum Assembly Line

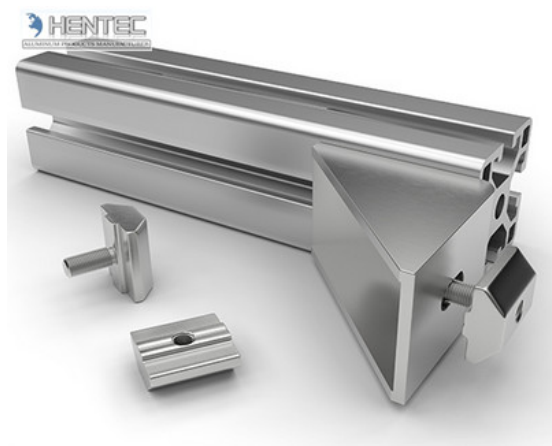
- (1).Suitable for industry,architecture,transportation and so on.
- (2).20 years warranty.
- (3).High corrosion resistance.
- (4).5-10 years weather resistance.
- (5).Good wear resistance & anti-scratch.
- (6).Size customized.

More Information:

- 1.Material:Aluminium alloy 6063, 6061.
- 2.Temper:T5, T6.
- 3.Quality standard:DIN, AAMA, China GB.
- 4.Surface treatment:Mill finish, anodized, powder coated, electrophoresis, sand blasting etc.
- 5.Color available:Silver, Any is available.
- 6.Packing details:Shrinking film;Plastic & kraft paper;Wooden pallet
Carton packing;By customer's requirements.
- 7.Samples time:One or two weeks.
- 8.Delivery:20-25 Days for Mass Production.
- 9.Production Capacity:6000MT/Month
- 10.MOQ:1 TONS
- 12.Payment terms:T/T
- 13.Port : Shanghai;As per requested.

Applications:

Industry Aluminum profile used in cars, trains machinery ,electronics, medical and other industrial filed . In terms of hardware, machinery, electromechanical parts, solar PV products, aluminum frames are adopt as important auxiliary materials. We also have aluminum profiles for radiators, fitness machinery, buildings, lighting instrument, windpipes, oil pipelines, for instance.



Specifications:

1.Primary Technical Data

1)Chemical composition

Alloy	Si	Fe	Cu	Mn	Mg	Cr	Zn	Ti	Impurity	Al
6063	0.2-0.6	0.35	0.1	0.1	0.45-0.9	0.1	0.1	0.1	0.15	Rest
6061	0.4-0.8	0.7	0.15-0.4	0.15	0.8-1.2	0.04-0.35	0.25	0.15	0.15	Rest
6060	0.3-0.6	0.1-0.3	0.1	0.1	0.35-0.6	-	0.15	0.1	0.15	Rest
6005	0.6-0.9	0.35	0.1	0.1	0.40-0.6	0.1	0.1	0.1	0.15	Rest

2)Mechanical property

Alloy	Temper	Tensile strength	Yield strength	Elongation
6063	T5	≥ 160Mpa	≥ 110Mpa	≥ 8%
	T6	≥ 205Mpa	≥ 180Mpa	≥ 8%
6061	T6	≥ 265Mpa	≥ 245Mpa	≥ 8%

公司图号	截面图	线密度 kg/m	公司图号	截面图	线密度 kg/m
HT-745		1.292	HT-752		1.646
HT-746		0.786	HT-753		2.952
HT-747		2.524	HT-754		2.015
HT-749		0.464	HT-767		1.522
HT-750		0.808			
HT-751		1.616			

Competitive Advantage:

- 1)Engineering design and support.
- 2)Aluminum profiles deeply processing:cutting,punching,drilling,milling,and fabricating.
- 3)High Quality system, strictly inspection during production and whole inspection before package.
- 4)Good performance, product warranty for 15 years.





+86 510 86061388 / 86215836



aluminum@hentec.com.cn



aluminumextrusion-profiles.com

Qinfeng Road No.555 Huashi Town Jiangyin Jiangsu China (mainland) 214421